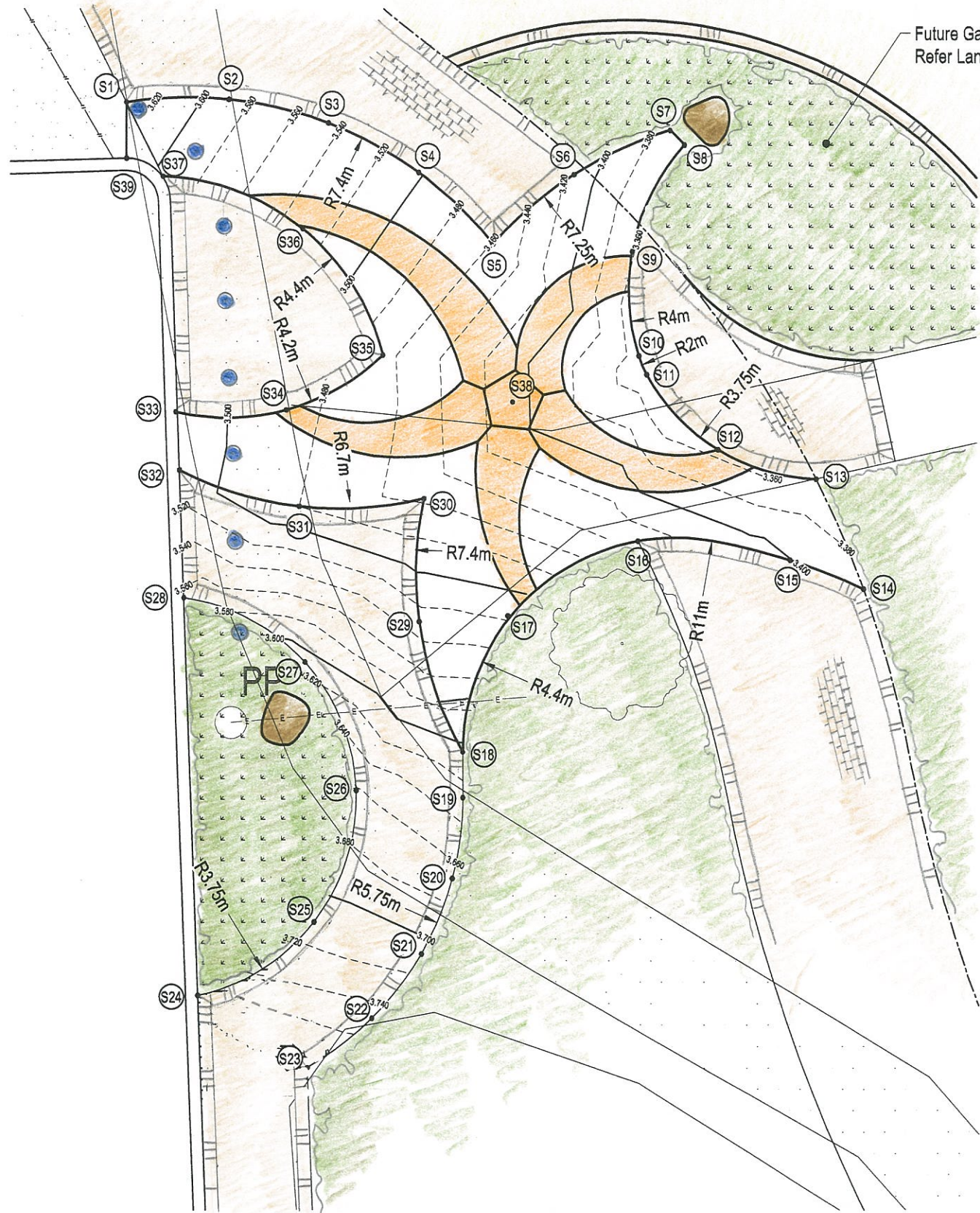


DATE PLOTTED: 21 June, 2007 - 3:56pm

NOTE:
 THE SERVICES INFORMATION SHOWN ON THIS DRAWING HAS BEEN DERIVED FROM THE FOLLOWING SOURCES:
 - SURFACE LOCATIONS OF SERVICES LOCATED BY THE SURVEYOR
 - PLAN DATA PROVIDED BY SERVICE AUTHORITIES
 THE CONTRACTOR OR CONSTRUCTION AUTHORITY IS TO CONFIRM THE ACTUAL LOCATIONS OF ALL EXISTING UNDERGROUND SERVICES PRIOR TO COMMENCEMENT OF CONSTRUCTION WORKS



PAVED STARFISH SETOUT TABLE

Point No.	Easting	Northing	Level
S1	490735.052	7203152.351	3.632
S2	490736.974	7203152.402	3.589
S3	490738.845	7203151.956	3.545
S4	490740.538	7203151.044	3.502
S5	490741.938	7203149.725	3.459
S6	490743.453	7203151.011	3.414
S7	490745.260	7203151.838	3.370
S8	490745.532	7203151.565	3.370
S9	490744.546	7203149.583	3.362
S10	490744.671	7203147.642	3.348
S11	490744.821	7203147.293	3.345
S12	490746.155	7203145.892	3.350
S13	490747.987	7203145.343	3.196
S14	490748.873	7203143.283	3.390
S15	490747.495	7203143.828	3.407
S16	490744.650	7203144.179	3.449
S17	490742.208	7203142.773	3.517
S18	490741.358	7203140.240	3.606
S19	490741.356	7203139.395	3.628
S20	490741.154	7203137.891	3.668
S21	490740.565	7203136.492	3.708
S22	490739.631	7203135.296	3.748
S23	490738.416	7203134.386	3.788
S24	490736.371	7203135.732	3.759
S25	490738.554	7203137.085	3.711
S26	490739.354	7203139.526	3.662
S27	490738.396	7203141.909	3.610
S28	490736.129	7203143.116	3.565
S29	490740.546	7203142.662	3.530
S30	490740.636	7203144.963	3.456
S31	490738.296	7203144.819	3.479
S32	490736.052	7203145.497	3.505
S33	490736.016	7203146.580	3.510
S34	490738.076	7203146.623	3.488
S35	490739.868	7203147.642	3.466
S36	490738.363	7203150.003	3.530
S37	490735.738	7203150.978	3.595
S38	490742.547	7203146.625	3.408
S39	490735.055	7203151.312	3.615

LEGEND

- Proposed Edge Restraint
- Proposed Barrier Kerb
- Proposed Centre-Line
- Proposed Paved Footpath
- Existing Tree



CAD FILE: S:\2930\00\293000\10\001\Acad\Rev B\2930-00-10 Rev B.dwg

REV.	DATE	REV. BY	REV. APPR.
B	21 JUNE 2007	AMENDMENTS TO STARFISH REFER LANDSCAPE ARCHITECT	

© Cardno (Qld) Pty Ltd All Rights Reserved 2004.
 Copyright in the whole and every part of this drawing belongs to Cardno (Qld) Pty Ltd and may not be used, sold, transferred, copied or reproduced in whole or in part in any manner or form or on any media, to any person other than by agreement with Cardno (Qld) Pty Ltd.
 This document is produced by Cardno (Qld) Pty Ltd solely for the benefit of and use by the client in accordance with the terms of the contract. Cardno (Qld) Pty Ltd does not and shall not assume any responsibility or liability whatsoever to any third party arising out of any use or reliance by third party on the content of this document.

DESIGNED: AM	DATE: A.H.D.
DRAWN: AM	
CHECKED: AG	
RECOMMENDED: PROJ. MGR.	APPROVED: PROJ. DIR.

Cardno
 Cardno (Qld) Pty Ltd
 Harvey Bay Office
 Unit 7 'Axis on Main', 55 Main Street
 P.O. Box 355, Harvey Bay, Queensland 4655.
 Email: hbo@cardno.com.au
 Web: www.cardno.com.au
 ACN: 051 074 992

HERVEY BAY CITY COUNCIL
 PROPOSED CARPARK UPGRADE
 DAYMAN STREET, URANGAN
 CIVIL WORKS
 PAVED STARFISH DETAIL

DATE: MARCH 2007	REV.
DRAWING No: 2930/00-10-13	B