

PLANT SCHEDULE (Drawing L03)

SYM.	SPECIES	SIZE	QTY	REMARKS
Ao	TREES	5 Litre	4	
Ao	Acacia elata (Cedar Wattle)	5 Litre	17	
As	Acmena smithii (Lily Pilly)	5 Litre	6	
At	Allocasuarina torulosa (Forest She-oak)	5 Litre	4	
Ab	Angophora bakeri (Narrow-leaved Apple)	5 Litre	41	
Ac	Angophora costata (Smooth-barked Apple)	5 Litre	9	
Bl	Banksia integrifolia (Coast Banksia)	5 Litre	7	
Bs	Banksia serrata (Old Man Banksia)	5 Litre	22	
Cs	Callistemon serratifolia (Black Wattle)	5 Litre	3	
CA	Caratopetalum apetalum (Coachwood)	5 Litre	5	
Cg	Caratopetalum gummiferum (NSW Christmas Bush)	5 Litre	18	
Eir	Eucalyptus reticulatus (Blueberry Ash)	5 Litre	10	
Eb	Eucalyptus botryoides (Bangalay, Sweeten Mahogany)	5 Litre	8	
Ep	Eucalyptus alpinia (Sydney Peppermint)	5 Litre	9	
Er	Eucalyptus resinifera (Red Mahogany)	5 Litre	4	
Eu	Eucalyptus umbra (Brace-leaved White Mahogany)	200 Litre	3	
Fr	Ficus rubiginosa (Port Jackson Fig)	5 Litre	11	
Gf	Glochidion fordsii (Cheese Tree)	200 Litre	50	
La	Livistona australis (Cabbage Palm)	5 Litre	24	
Sg	Syncaesia glummitifera (Turpentine)	5 Litre	16	
Sy	Syncomia glandulosum (Scented Rosewood)			

SHRUBS, GROUNDCOVERS AND CLIMBERS

SYM.	SPECIES	SIZE	QTY	REMARKS
Am	Alpinia casulea (Native Ginger)	5 Litre	128	
Am	Alpinia minor	tube	370	
Ao	Agapanthus orientalis (Lesser Flame Flower)	150mm	1256	3 per m ²
Crn	Clivia miniata (Clivia, Kaffir Lily)	5 Litre	40	
Ca	Cordyline australis (Palm Lily, Grass Palm)	5 Litre	171	
Cp	Criminum pandunculatum (Swamp Lily)	tube	2443	4 per m ²
Dc	Dianella caerulea (Native Flax Lily)	150mm	444	
Di	Dietes bicolor (White Iris, Day Lily)	150mm	92	
Di	Dodonaea triquetra (Hop Bush)	5 Litre	267	
De	Doryanthus exaltata (Gymea Lily)	tube	185	
Em	Eucalyptus microphylla (Coral Heath)	tube	200	4 per m ²
Ea	Entolasia stricta (Wiry Panic)	tube	107	
Gs	Grevillea sericea (Pine Spider Flower)	tube	92	
Hs	Hakea sericea (Needle Bush, Silky Hakea)	tube	1835	2 per m ²
Hd	Hibbertia dentata (Guinea Flower - type)	tube	475	
Li	Lomandra longifolia (Star Bush)	5 Litre	145	
Mp	Muraya paniculata (Auraya)	tube	49	
Pp	Pandorea pandorana (Vernice Yampa Vine)	5 Litre	16	
P	Parthenocissus tricuspidata (Boston Ivy)	tube	90	
Pe	Persoonia linearis (Narrow-leafed Geebung)	tube	185	
Pi	Pinella trifida (Slender Rice Flower)	tube	1077	2 per m ²
Pa	Poa affinis (Tussock Grass - type)	150mm	65	
Fo	Prostanthera ovalifolia (Purple or Oval-leaf Mint Bush)	tube	185	4 per m ²
Pd	Pultenaea daphnoides (Large-leaf Bush Pea)	tube	200	4 per m ²
Sp	Stipa pubescens (Tall Spear Grass)	tube	200	4 per m ²
Ta	Themedia australis (Kangaroo Grass)	tube	1728	2 per m ²
Vh	Viola hederacea (Native Violet)			

PLANT SCHEDULE (Drawing L04)

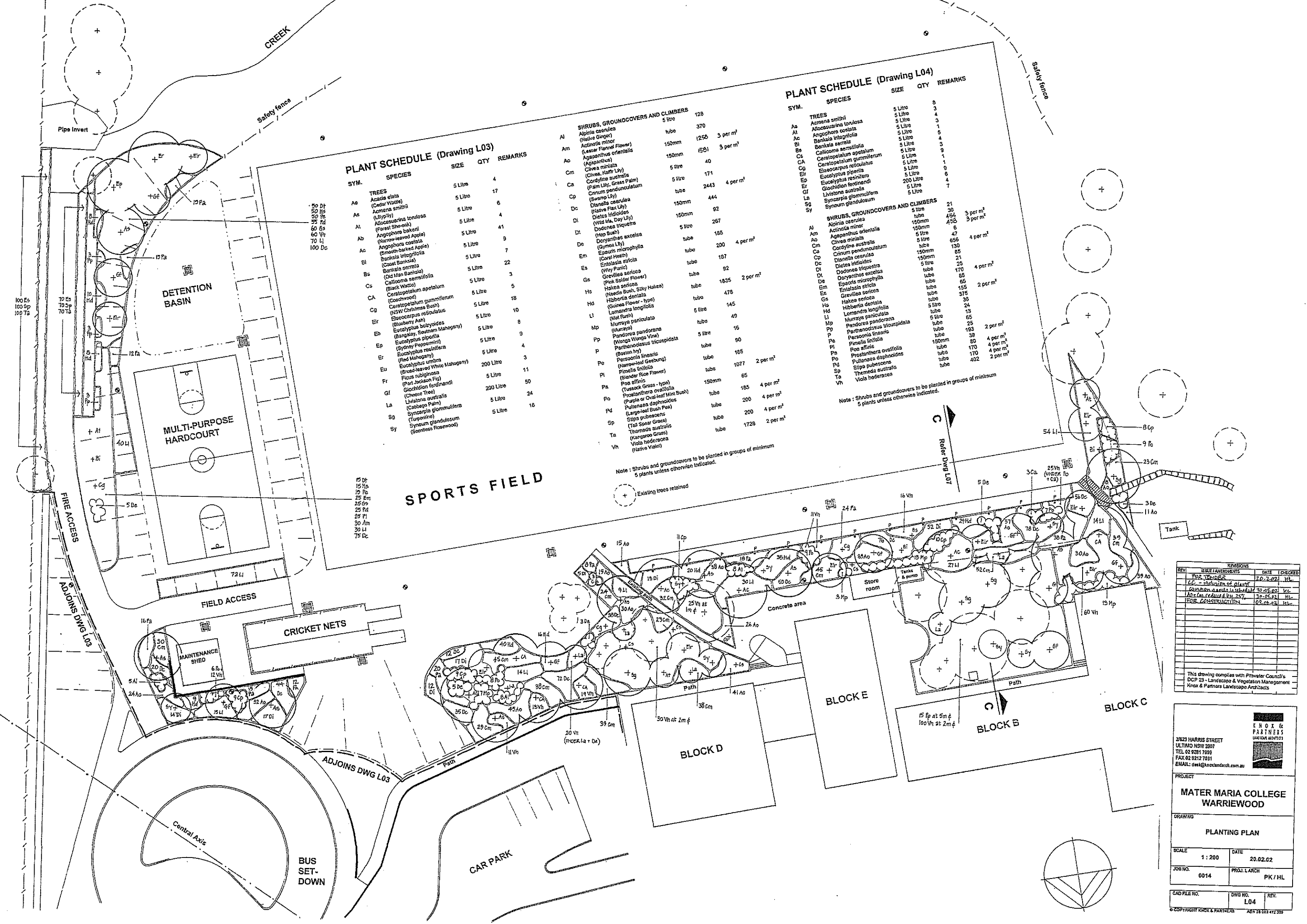
SYM.	SPECIES	SIZE	QTY	REMARKS
Ao	TREES	5 Litre	8	
Al	Alpinia casulea	5 Litre	3	
Ac	Allocasuarina torulosa	5 Litre	4	
Bl	Banksia integrifolia	5 Litre	1	
Ca	Banksia serrata	5 Litre	5	
Cs	Callistemon serratifolia	5 Litre	3	
CA	Caratopetalum apetalum	5 Litre	9	
Cg	Caratopetalum gummiferum	5 Litre	1	
Eir	Eucalyptus reticulatus	5 Litre	1	
Ep	Eucalyptus alpinia	5 Litre	1	
Er	Eucalyptus resinifera	5 Litre	1	
Gf	Glochidion fordsii	200 Litre	6	
La	Livistona australis	5 Litre	4	
Sg	Syncaesia glummitifera	5 Litre	7	
Sy	Syncomia glandulosum	5 Litre	21	

SYM.	SPECIES	SIZE	QTY	REMARKS
Am	SHRUBS, GROUNDCOVERS AND CLIMBERS	tube	30	
Am	Alpinia casulea	tube	454	3 per m ²
Am	Alpinia minor	150mm	456	3 per m ²
Ao	Agapanthus orientalis	150mm	6	
Crn	Clivia miniata	5 Litre	47	4 per m ²
Ca	Cordyline australis	tube	656	
Cp	Criminum pandunculatum	tube	130	
Dc	Dianella caerulea	150mm	85	
Di	Dietes bicolor	150mm	21	
Di	Dodonaea triquetra	5 Litre	25	
De	Doryanthus exaltata	tube	170	4 per m ²
Em	Eucalyptus microphylla	tube	85	
Ea	Entolasia stricta	tube	65	
Gs	Grevillea sericea	tube	155	2 per m ²
Hs	Hakea sericea	tube	375	
Hd	Hibbertia dentata	tube	38	
Li	Lomandra longifolia	5 Litre	24	
Mp	Muraya paniculata	tube	13	
Pp	Pandorea pandorana	5 Litre	65	
P	Parthenocissus tricuspidata	tube	25	
Pe	Persoonia linearis	tube	193	2 per m ²
Pi	Pinella trifida	tube	38	
Pa	Poa affinis	150mm	80	4 per m ²
Fo	Prostanthera ovalifolia	tube	170	4 per m ²
Pd	Pultenaea daphnoides	tube	170	4 per m ²
Sp	Stipa pubescens	tube	402	2 per m ²
Ta	Themedia australis			
Vh	Viola hederacea			

Note: Shrubs and groundcovers to be planted in groups of minimum 5 plants unless otherwise indicated.

Note: Shrubs and groundcovers to be planted in groups of minimum 5 plants unless otherwise indicated.

Existing trees retained



REV	REVISIONS	DATE	CHECKED
1	FOR TENDER	10.10.02	HL
2	FOR CONSTRUCTION	20.02.02	HL
3	FOR CONSTRUCTION	03.02.02	HL

2/623 HARRIS STREET
ULTIMO NSW 2007
TEL: 02 9281 7999
FAX: 02 9212 7931
EMAIL: dsw@knoxandpartners.com.au

KNOX & PARTNERS
LANDSCAPE ARCHITECTS

PROJECT
MATER MARIA COLLEGE WARRIWOOD

DRAWING
PLANTING PLAN

SCALE: 1:200 DATE: 20.02.02

JOB NO. 0014 PROJ. L ARCH PK / HL

CAD FILE NO. DWG NO. L04 REV.

© COPYRIGHT KNOX & PARTNERS A/N 28 033 472 350