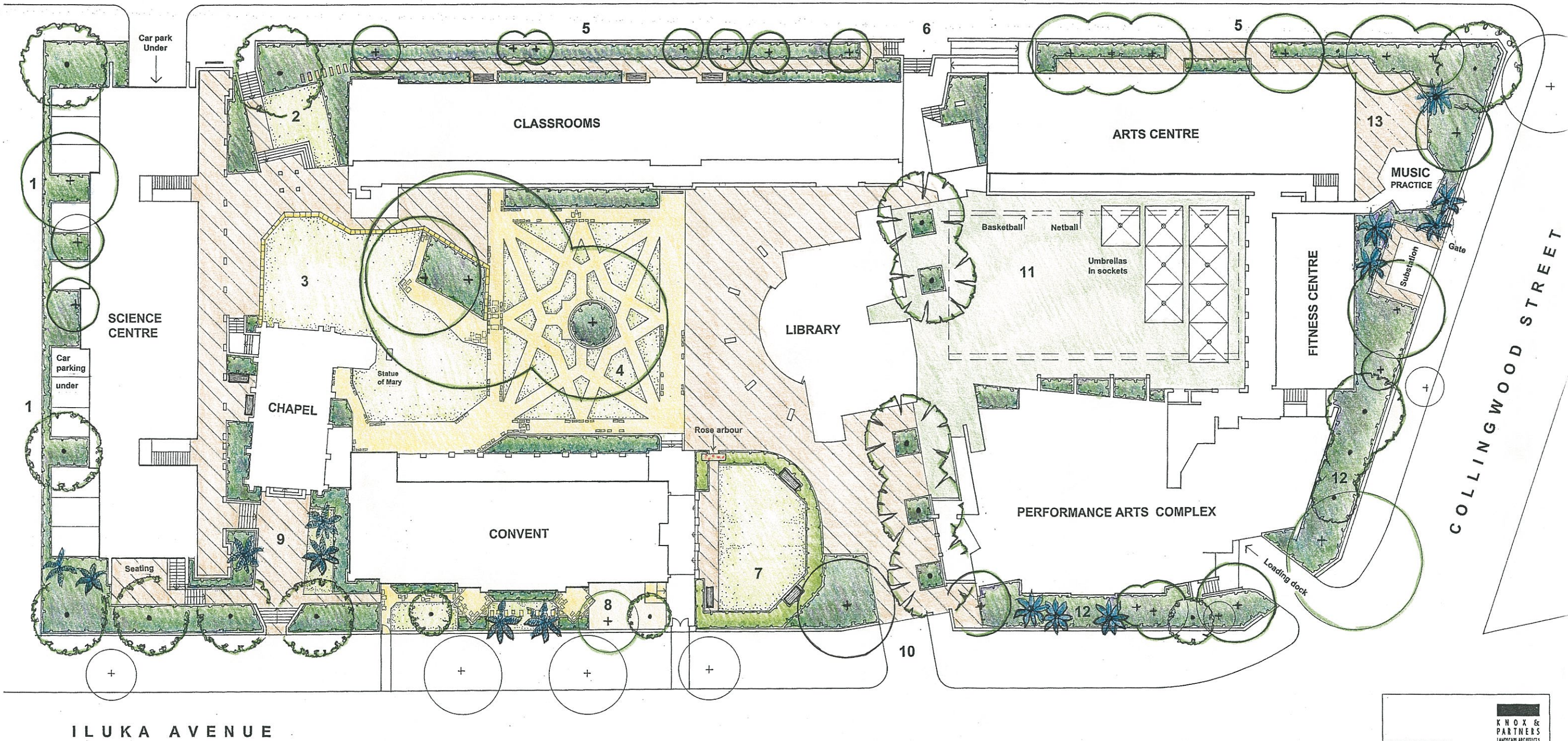


EUROBIN AVENUE



ILUKA AVENUE

COLLINGWOOD ST

LEGEND

- Existing trees and palms to be retained
- Proposed trees and palms
- Feature trees (Norfolk Island Pines)
- Shrubs and / or ground covers
- Hedge
- Lawn
- Brick pavement (herringbone pattern)
- Sandstone pavement
- Wall
- Boundary wall and / or fence

- 1. NORTHERN BOUNDARY**
Mass planting with major trees in bays to shade parking area and to lessen impact of school buildings on neighbours.
- 2. POCKET LAWN**
Small lawn area with access to morning winter sunlight.
- 3. CENTRAL LAWN**
Existing setting of Chapel, Administration and General Teaching Building preserved.
- 4. FOCAL COURTYARD**
Protection and management of existing trees, and re-instatement of Star Pattern sandstone pavement.
- 5. EUROBIN AVENUE BOUNDARY**
Existing trees preserved, fence repaired, ground level planting enhanced, sunny seating along building façade.
- 6. NEW MAIN ENTRY**
Accessible ramps to AS1428.2. Specimen trees to internal space visible through glass foyer.
- 7. HEDGED NUN'S GARDEN**
Enclosed seating space for private study and conversation. Creation of small courtyard foreground to triple-arched arcade of convent building.
- 8. WALLED GARDEN**
Foreground to convent building creates private seating space and staff courtyard. Detailed ornamental planting.
- 9. FORECOURT TO CHAPEL**
Paved forecourt provides useable space forward of Chapel and accommodates various movement routes. Broad stair leads up from lych gate entrance at Iluka Avenue.
- 10. MAJOR ENTRY FROM ILUKA AVENUE**
Public approach to Lyric Theatre Complex. Tall feature trees and brick pavement create entry plaza character. Occasional vehicular access possible for deliveries, service etc.
- 11. BASKETBALL / NETBALL COURT**
Green-on-green acrylic surface colour scheme to minimise actual and perceived heat. Shade trees as space permits, plants supported on building facades, removable shade umbrellas.
- 12. PLANTING TO SOUTHERN CORNER**
Planting character to build on existing trees with emergent palms. Boundary wall completed around corner. Vehicular access to loading dock.
- 13. INFORMAL SEATING AREA AND / OR ALLOTMENT GARDEN**
Shady paved seating area with generous tree canopy. Possible student and / or community garden plot.

KNOX & PARTNERS
LANDSCAPE ARCHITECTS

2/623 HARRIS STREET
ULTIMO NSW 2007
TEL 02 9281 7999
FAX 02 9212 7031
EMAIL: knoxptr@ozemail.com.au

PROJECT
STELLA MARIS COLLEGE QUEENSLIFF

DRAWING
LANDSCAPE MASTER PLAN

SCALE	1 : 200	DATE	21.05.01
JOB NO.	0031	PROJ. L ARCH	PK
CAD FILE NO.	DWG NO.	REV.	
	L01		

© COPYRIGHT KNOX & PARTNERS AEN 28 003 472 339